



India Meteorological Department
(Ministry of Earth Sciences)

BULLETIN NO. 2 (BOB/05/2022)

TIME OF ISSUE:1430 HOURS IST

DATED: 09.08.2022

FROM: INDIA METEOROLOGICAL DEPARTMENT (FAX NO. 24643965/24699216/24623220)

TO: CONTROL ROOM, NDM, MINISTRY OF HOME AFFAIRS (FAX.NO. 23093750)

CONTROL ROOM NDMA (FAX.NO. 26701729)

CABINET SECRETARIAT (FAX.NO.23012284, 23018638)

PS TO HON'BLE MINISTER FOR S & T AND EARTH SCIENCES (FAX NO.23316745)

SECRETARY, MOES (FAX NO. 24629777)

H.Q. (INTEGRATED DEFENCE STAFF AND CDS) (FAX NO. 23005137/23005147)

DIRECTOR GENERAL, DOORDARSHAN (23385843)

DIRECTOR GENERAL, AIR (23421105, 23421219)

PIB MOES (FAX NO. 23389042)

UNI (FAX NO. 23355841)

D.G. NATIONAL DISASTER RESPONSE FORCE (NDRF) (FAX NO. 26105912, 2436 3260)

DIRECTOR, PUNCTUALITY, INDIAN RAILWAYS (FAX NO. 23388503)

CHIEF SECRETARY, ANDAMAN & NICOBAR ISLANDS (FAX NO. 03192- 232656)

CHIEF SECRETARY, GOVT. WEST BENGAL (FAX NO. 033-22144328)

CHIEF SECRETARY, GOVT. OF ODISHA (FAX NO. 0674 -2536660)

CHIEF SECRETARY, GOVT. OF ANDHRA PRADESH (FAX NO. 0863-2441029, 08645-246600)

CHIEF SECRETARY, GOVT. OF TAMIL NADU (FAX NO. 044-25672304)

CHIEF SECRETARY, GOVT. OF PUDUCHERRY (FAX NO. 0413-2337575, 2334145)

CHIEF SECRETARY, GOVT. OF GUJARAT (FAX NO. 079-23250305)

CHIEF SECRETARY, GOVT. OF MAHARASHTRA (FAX NO. 022- 22028594)

CHIEF SECRETARY, GOVT. OF CHHATTISGARH (FAX NO. 771-2221206)

CHIEF SECRETARY, GOVT. OF JHARKHAND (FAX NO. 651-2400255)

CHIEF SECRETARY, GOVT. OF TELANGANA (FAX NO.040-23453700)

CHIEF SECRETARY, GOVT. OF MADHYA PRADESH (FAX NO. 755-2441076)

Sub: Depression over costal Odisha and neighbourhood

The depression over coastal Odisha and neighbourhood has moved westwards with a speed of about 10 kmph during past 3-hours and lay centered at 1130 hours IST of today, the 9th August, 2022 over the same region near latitude 20.8°N and longitude 85.3°E about 85 km northwest of Bhubaneswar (Odisha).

It is likely to move west-northwestwards, maintain its intensity today and weaken gradually into a well-marked low pressure area over Chhattisgarh and neighbourhood tomorrow.

Warnings:

(i) Rainfall (warning graphics enclosed)

9th August: Heavy to very heavy rainfall with extremely heavy falls at isolated places is very likely over Odisha, Vidarbha and Chhattisgarh; **heavy to very heavy rainfall at isolated places** is very likely over Madhya Pradesh and **heavy rainfall at isolated places** is very likely over Gangetic West Bengal, north Coastal Andhra Pradesh & Yanam, Telangana and Marathwada.

10th August: Heavy to very heavy rainfall at isolated places is likely over Madhya Pradesh, Madhya Maharashtra, Vidarbha, Chhattisgarh, Odisha and Gujarat region and **heavy rainfall at isolated places** is likely over Jharkhand, Gangetic West Bengal and East Rajasthan.

11th August: **Heavy to very heavy rainfall at isolated places** is likely over Madhya Pradesh and Gujarat State; and **heavy rainfall at isolated places** is likely over East Rajasthan, Madhya Maharashtra, Vidarbha, Chhattisgarh, Jharkhand, Odisha and Gangetic West Bengal.

12th August: **Heavy to very heavy rainfall at isolated places** is likely over west Madhya Pradesh and **heavy Rainfall at isolated places** is likely over Gujarat state, Rajasthan, Chhattisgarh and Odisha.

13th August: **Heavy to very heavy rainfall at isolated places** is likely over Odisha and **heavy rainfall at isolated places** is likely over Rajasthan, Madhya Pradesh, Chhattisgarh, Jharkhand, Coastal Andhra Pradesh and Gangetic West Bengal.

(ii) Wind warning:

9th August: Squally wind speed reaching 45-55 kmph gusting to 65 kmph is very likely over north Bay of Bengal along & off Odisha & West Bengal coasts, central & adjoining south Bay of Bengal and along & off Andhra Pradesh, Tamil Nadu, and Comorin area & east Sri Lanka coasts. Squally weather with wind speed reaching 40-50 kmph gusting to 60 kmph is very likely over Andaman Sea and parts of south Bay of Bengal.

10th August: Squally wind speed reaching 45-55 kmph gusting to 65 kmph is very likely over northwest Bay of Bengal along & off Odisha & West Bengal coasts, central & adjoining south Bay of Bengal and along & off North Andhra Pradesh, Tamil Nadu, and Comorin area & east Sri Lanka coasts. Squally weather with wind speed reaching 40-50 kmph gusting to 60 kmph is very likely over northeast Bay of Bengal and Andaman Sea.

11th August: Squally wind speed reaching 40-50 kmph gusting to 60 kmph is very likely over north Bay of Bengal along & off Odisha & West Bengal coasts, central & adjoining south Bay of Bengal and along & off south Tamil Nadu coast, Comorin area & southeast Sri Lanka coasts.

12th August: Squally wind speed reaching 40-50 kmph gusting to 60 kmph over central Bay of Bengal and adjoining north Bay of Bengal & parts of south Bay of Bengal.

(iii) Sea condition

Sea condition is likely to be rough to very rough over north Bay of Bengal along & off Odisha & West Bengal coasts, central & adjoining south Bay of Bengal and along & off Andhra Pradesh, Tamil Nadu, and Comorin area & east Sri Lanka coasts and Andaman Sea during 9th to 11th August and **over** central Bay of Bengal & adjoining north Bay of Bengal & parts of south Bay of Bengal on 12th August.

(iv) Fishermen Warning

Fishermen are advised not to venture into north Bay of Bengal along & off Odisha & West Bengal coasts, central & adjoining south Bay of Bengal and along & off Andhra Pradesh, Tamil Nadu, and Comorin area & east Sri Lanka coasts and Andaman Sea during 9th to 11th August and into central & adjoining North Bay of Bengal & parts of south Bay of Bengal and Andaman Sea on 12th August.

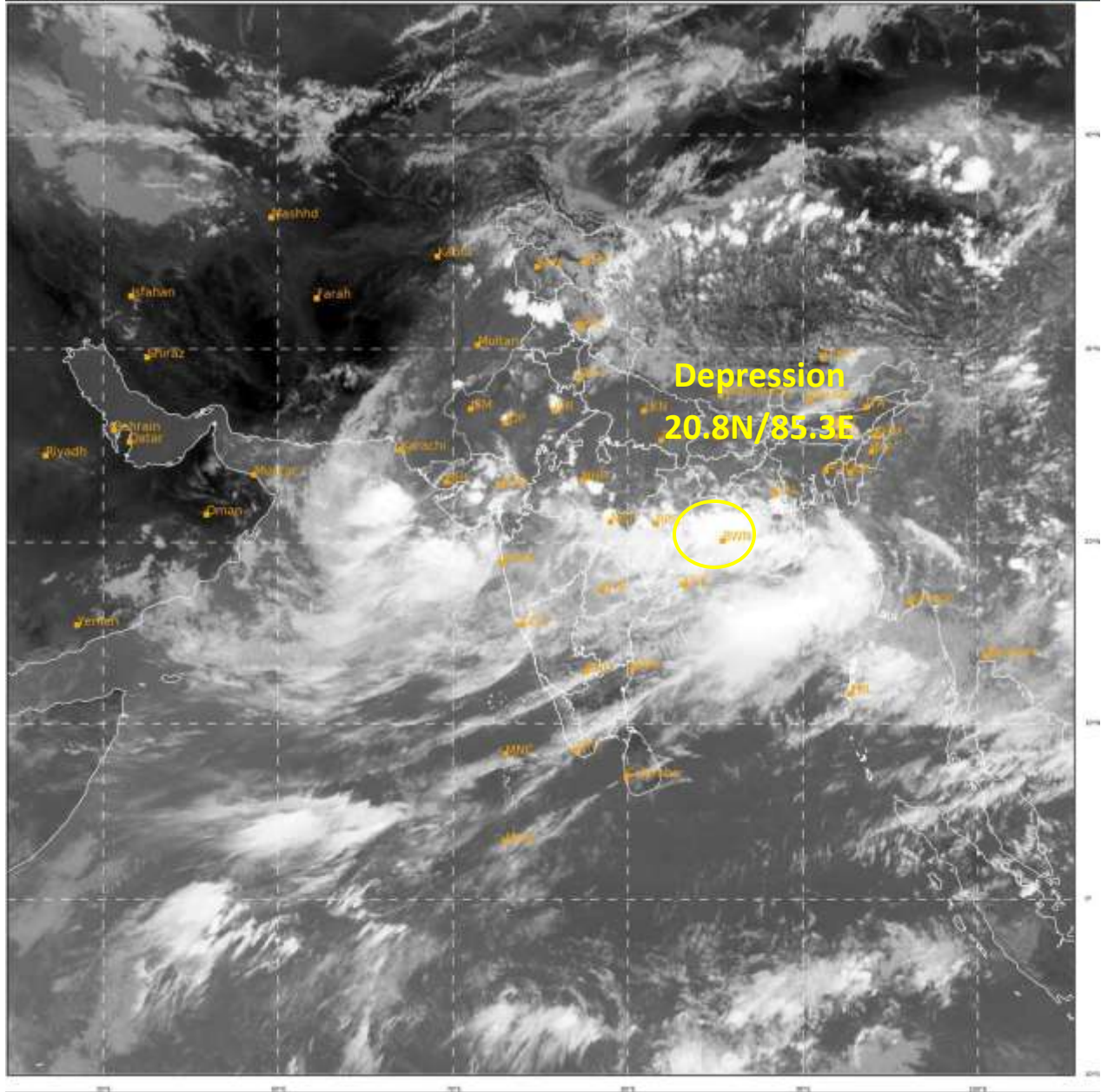
The system is under continuous surveillance and the next message will be issued at 2030 hours IST of today, the 9th August, 2022.

(Dr. RK JENAMANI)

Scientist F, Cyclone Warning, New Delhi

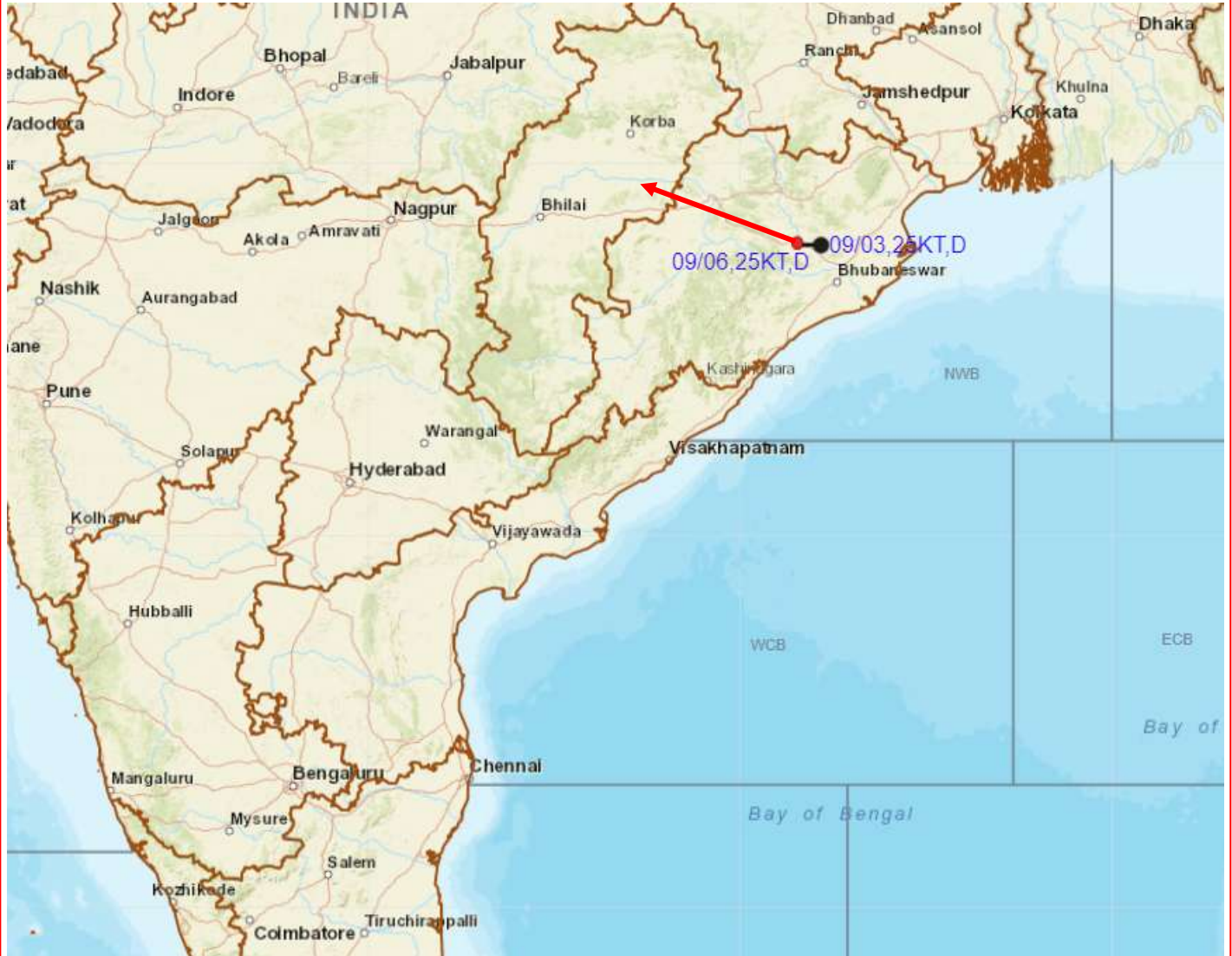
Copy to: ACWC Kolkata/ ACWC Chennai/ CWC Bhubaneswar/CWCVisakhapatnam/CWC Ahmedabad/ MO Port Blair/MC Raipur/MC Bhopal/MC Hyderabad/RMC Nagpur

LEGEND: Heavy Rainfall: 64.5 to 115.5mm, **Very Heavy Rainfall:** 115.6 to 204.4mm **Most Places:** more than 76% of total stations, **Isolated Places:** Less than 25% of total





OBSERVED AND FORECAST TRACK OF DEPRESSION OVER COASTAL ODISHA AND NEIGHBORHOOD BASED ON 0600 UTC OF 09TH AUGUST, 2022



DATE/TIME IN UTC

IST=UTC + 0530

L: LOW PRESSURE AREA

WML: WELL MARKED LOW PRESSURE AREA

D: DEPRESSION (17-27 KT)

DD: DEEP DEPRESSION (28-33 KT)

CS: CYCLONIC STORM (34-47 KT)

SCS: SEVERE CYCLONIC STORM (48-63KT)

VSCS: VERY SEVERE CYCLONIC STORM (64-89 KT)

ESCS: EXTREMELY SEVERE CYCLONIC STORM (90-119 KT)

SuCS: SUPER CYCLONIC STORM (\geq 120 KT)

● LESS THAN 34 KT

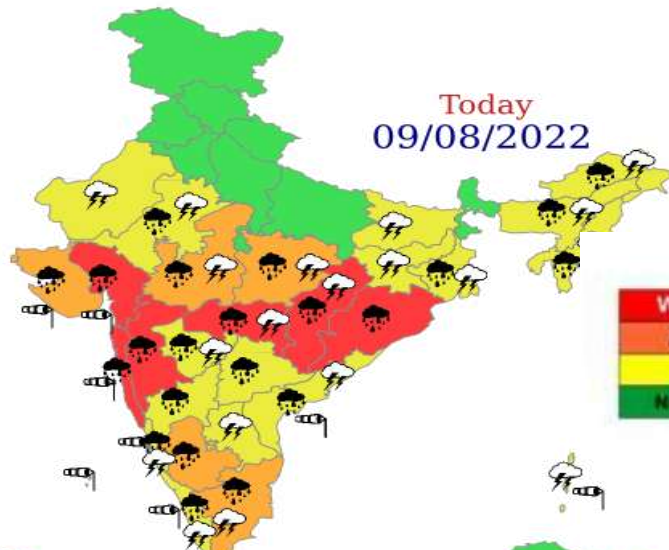
⊖ 34-47 KT

⊖ \geq 48 KT

— OBSERVED TRACK

— FORECAST TRACK

▲ CONE OF UNCERTAINTY



WARNING

WARNING (TAKE ACTION)

ALERT (BE PREPARED)

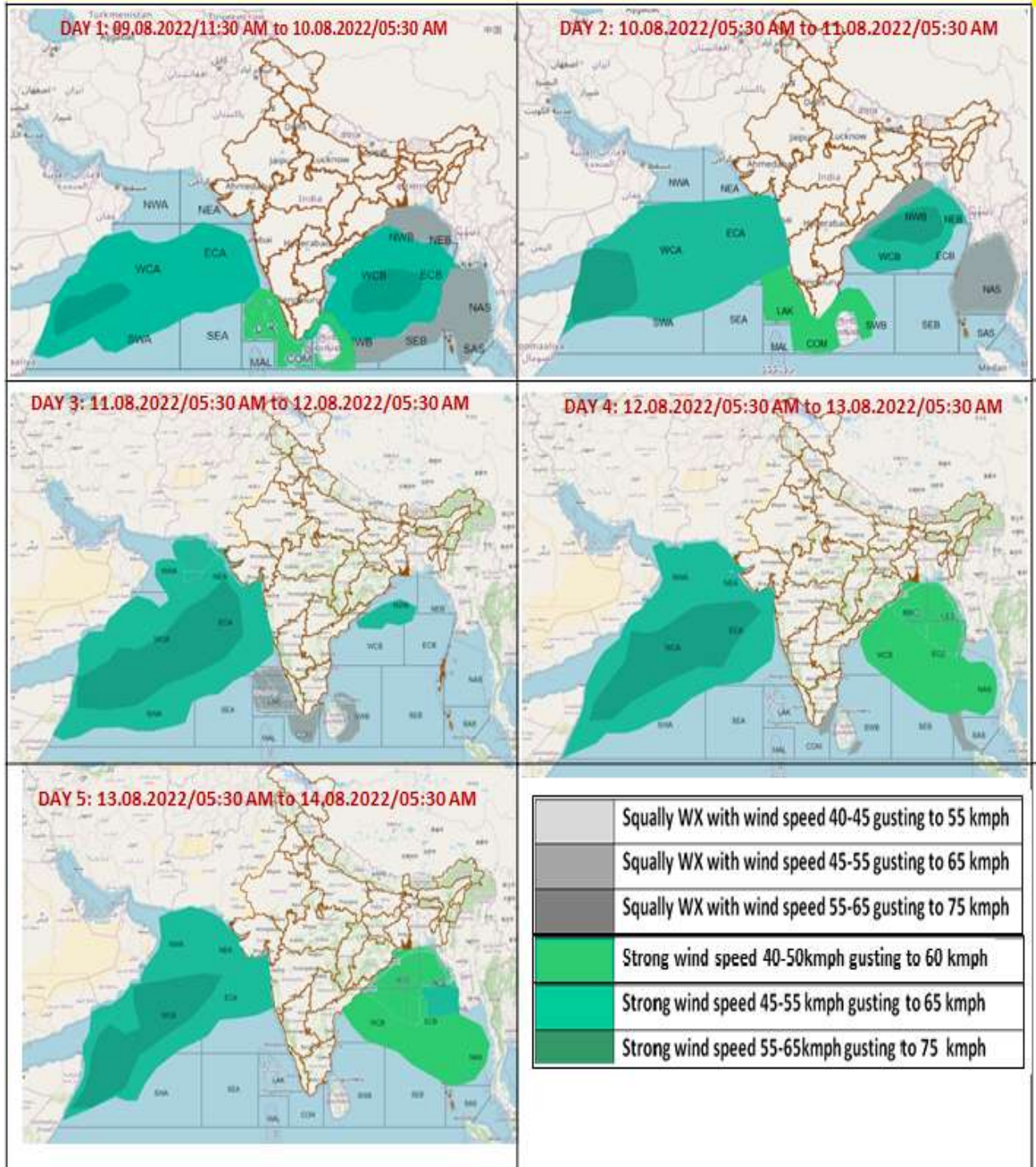
WATCH (BE UPDATED)

NO WARNING (NO ACTION)



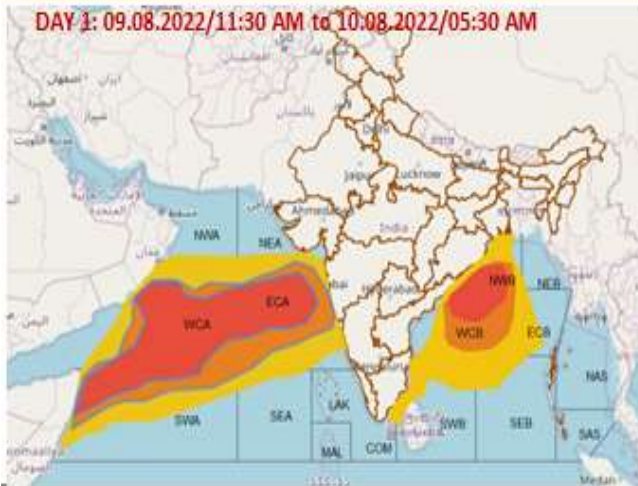
- | | | | |
|--|--|--|--|
|  Heavy Rain |  Heavy Snow |  Thunderstorm |  Dust Storm |
|  Strong Winds |  Visibility |  Cyclone |  Squall/ Hail |
|  Frost |  Cold Wave |  Heat Wave |  Sea State |

Fishermen Warning Graphics

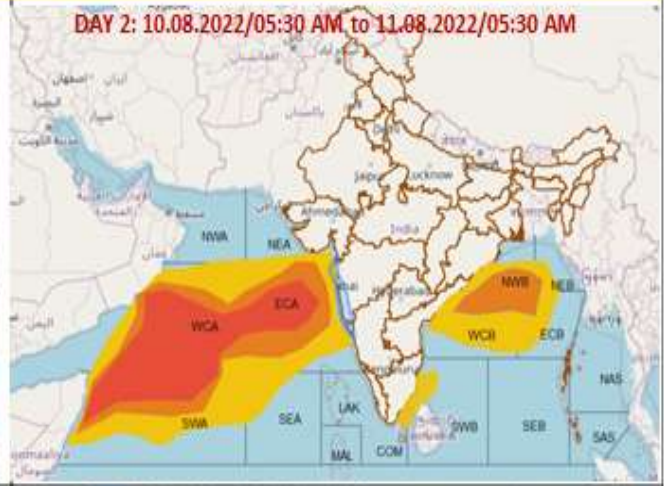


Probability of exceedance of maximum sustained winds ≥ 45 kmph

DAY 1: 09.08.2022/11:30 AM to 10.08.2022/05:30 AM



DAY 2: 10.08.2022/05:30 AM to 11.08.2022/05:30 AM



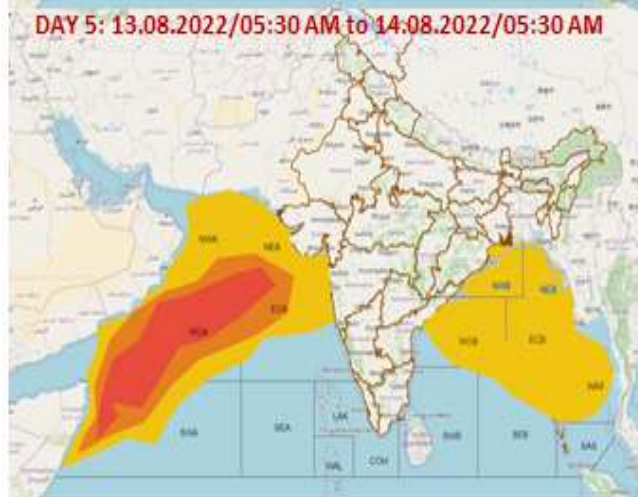
DAY 3: 11.08.2022/05:30 AM to 12.08.2022/05:30 AM



DAY 4: 12.08.2022/05:30 AM to 13.08.2022/05:30 AM



DAY 5: 13.08.2022/05:30 AM to 14.08.2022/05:30 AM



	Probability of exceedance
	Low (1-33%)
	Moderate (34-67%)
	High (68-100%)